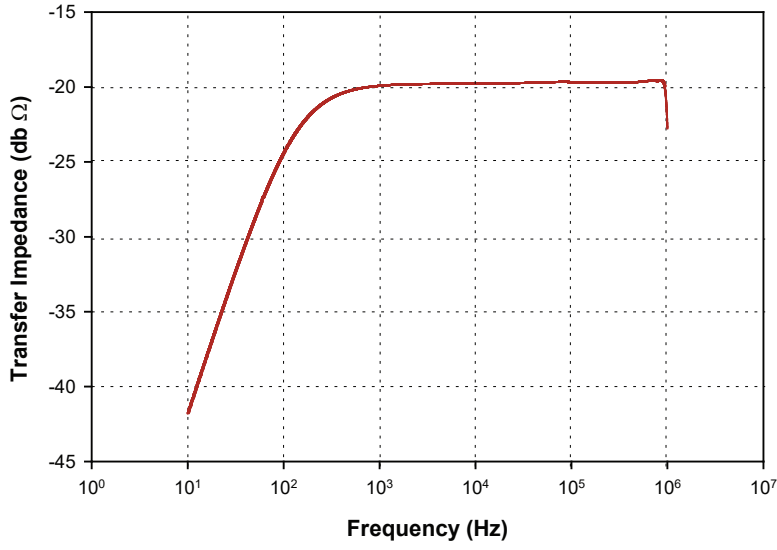
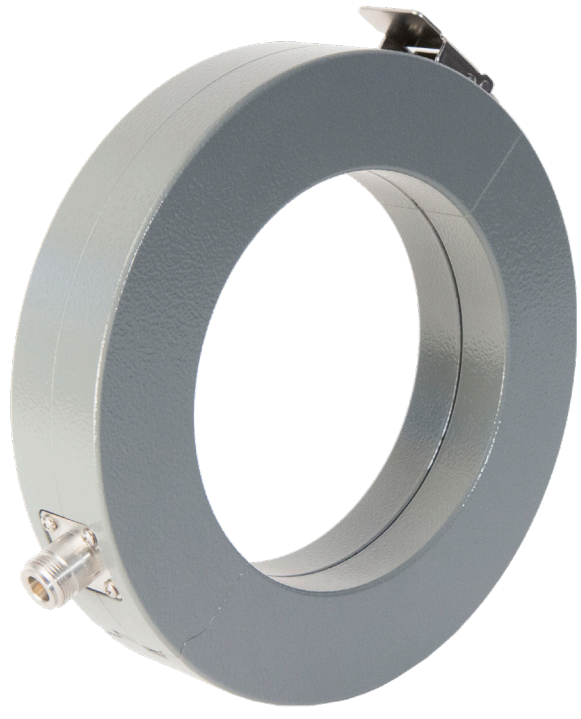


F - 180907-1005-3

CURRENT PROBE

The F-180907-1005-3 is for laboratory and field testing. This probe has a large inner diameter of 127mm to accommodate large cable bundles. Primary power currents of 1000 amperes DC – 400 Hz will not alter its transfer impedance.



Specifications

Frequency:	10 kHz – 1 MHz
Internal diameter:	127 mm
External diameter:	197 mm
Height:	41 mm
Z _t Ω ¹ :	0.10
dBΩ ¹ :	-20
Connector:	Type-N
DC to 400 Hz:	1000 amperes
RF(CW):	10 amperes
Peak Pulse Current ² :	100 amperes

1: Probe calibrated with 50 Ω + j0Ω Load Impedance.
2: Depends upon the pulse width and pulse rep. rate.



Fischer Custom Communications, Inc.

20603 Earl St., Torrance, CA 90503
Phone: 310-303-3300
Fax: 310-371-6268
Email: sales@fischercc.com

© Fischer Custom Communications, Inc.